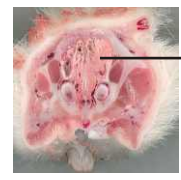


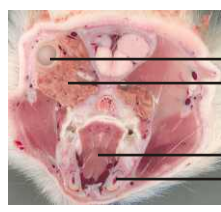
Rat anatomy guide for whole body autoradiography and microPET:

Head and neck

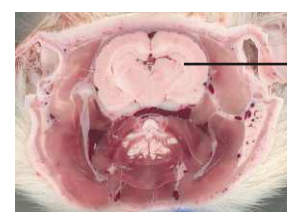
Transverse sections at 1 cm intervals



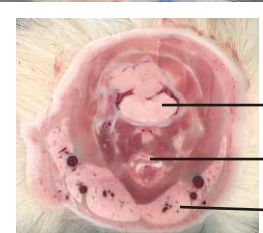
Nasal cavity



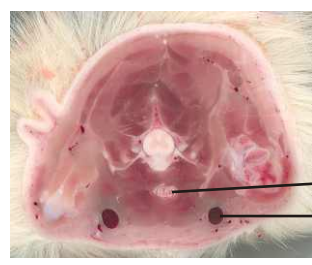
Eye
 Harderian gland
 Tongue
 Lower incisor



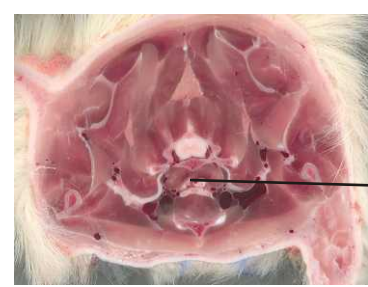
Brain (at level of thalamus)



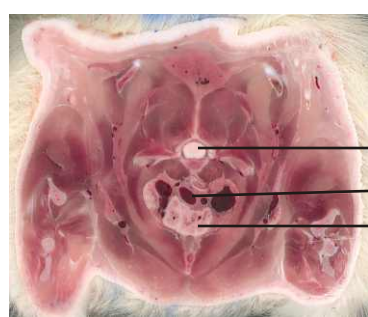
Brain stem
 Esophagus
 Salivary gland



Trachea
 Jugular vein



Esophagus



Spinal cord
 Aorta
 Thymus